

## SPECIFICATION

Wattage:	Various
Supply voltage:	220-240V 50/60Hz
Ingress protection IP:	IP54
Impact protection IK:	IK05
Colour temperature:	3000K/ 4000K
Driver:	Tridonic
Chip:	Samsung
Power factor:	>0.95
Lifetime @ L70:	50 000hrs
Diffuser:	Microprismatic

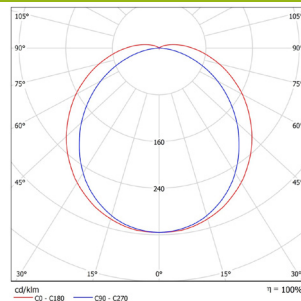


## DESCRIPTION

A surface IP54 LED luminaire with translucent micro-linear diffuser and screwed end caps for increased security.

IES/LDT files available on request.

## PHOTOMETRIC



## FURTHER INFORMATION

Mounting: Surface, Suspended

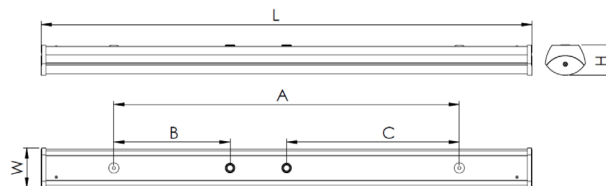
Body: Steel Sheet  
Colour: White

Available on request;  
Dimming: DALI, Switch Dimming, Corridor Function.  
Emergency: 3hrs, DALI  
Sensor: Microwave

## AVAILABLE OPTIONS

Rated power(W)	Lumens (lm)	Colour Temperature (K)	CRI	Luminaire Efficacy(lm/W)	Beam Angle	Dimensions L W H(mm)
10	1271	4000	>80	124	120°	615 x 97 x 72
15	1906	4000	>80	132	120°	615 x 97 x 72
21	2593	4000	>80	124	120°	615 x 97 x 72
26	3225	4000	>80	124	120°	615 x 97 x 72
22	3085	4000	>80	143	120°	1175 x 97 x 72
27	3811	4000	>80	143	120°	1175 x 97 x 72
38	5185	4000	>80	136	120°	1175 x 97 x 72
50	6450	4000	>80	128	120°	1175 x 97 x 72
26	3856	4000	>80	146	120°	1455 x 97 x 72
33	4764	4000	>80	143	120°	1455 x 97 x 72
48	6481	4000	>80	136	120°	1455 x 97 x 72
63	8062	4000	>80	128	120°	1455 x 97 x 72

## TECHNICAL DRAWINGS



L, mm	W, mm	H, mm	A, mm	B, mm	C, mm
615	97	72	526	391	-
1175			825	277.5	412.5
1455			1125	427.5	562.5