

SPECIFICATION

Wattage:	Various
Supply voltage:	220-240V 50/60Hz
Ingress protection IP:	IP23
Impact protection IK:	IK07
Colour temperature:	3000K/ 4000K
Driver:	Tridonic
Chip:	Samsung
Power factor:	>0.95
Lifetime @ L70:	50 000hrs
Diffuser:	Polycarbonate

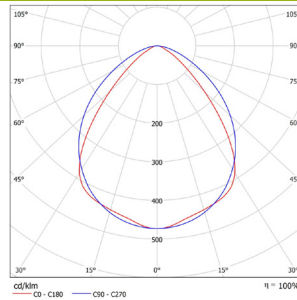


DESCRIPTION

An industrial LED luminaire, IP23 rated, with corrosion resistant galvanised steel body and various optics for precise light control.

IES/LDT files available on request.

PHOTOMETRIC



FURTHER INFORMATION

Mounting: Surface, Suspended

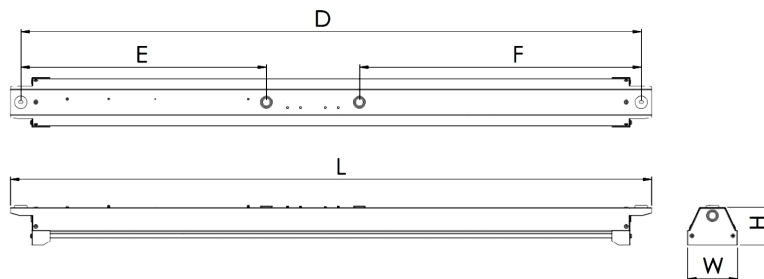
Body: Galvanised sheet steel
Colour: Light Grey

Available on request;
Dimming: DALI, Digital, Switch
Emergency: DALI, 3hrs
Sensor: Corridor Function, PIR
Beam Angles: 30°x90°, 60°x100°, 90°x100°, Asymmetric, Double Asymmetric.

AVAILABLE OPTIONS

Rated power(W)	Lumens (lm)	Colour Temperature (K)	CRI	Luminaire Efficacy(lm/W)	Beam Angle	Dimensions L W H(mm)
24	3586	4000	>80	148	See Further Information	1240 x 96 x 73
34	4877	4000	>80	144	See Further Information	1240 x 96 x 73
51	6651	4000	>80	132	See Further Information	1240 x 96 x 73
61	8345	4000	>80	136	See Further Information	1240 x 96 x 73
30	4482	4000	>80	148	See Further Information	1530 x 96 x 73
42	6097	4000	>80	144	See Further Information	1530 x 96 x 73
63	8313	4000	>80	132	See Further Information	1530 x 96 x 73
76	10431	4000	>80	137	See Further Information	1530 x 96 x 73

TECHNICAL DRAWINGS



L, mm	W, mm	H, mm	D, mm	E, mm	F, mm
1240	73	96	1200	475	545
1540			1500	625	695